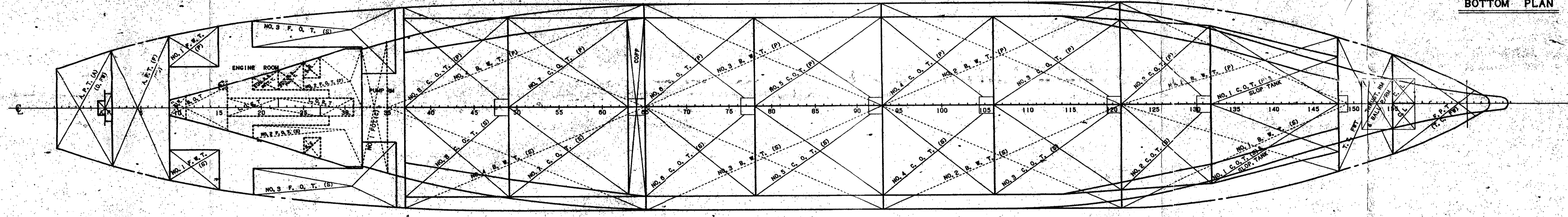
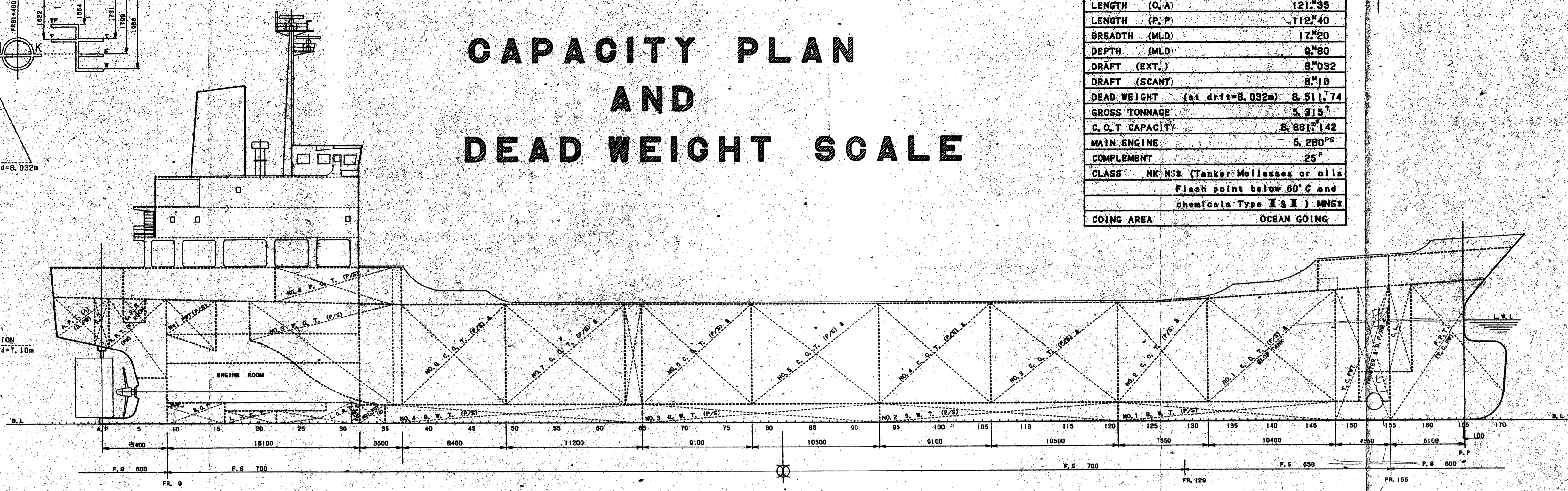
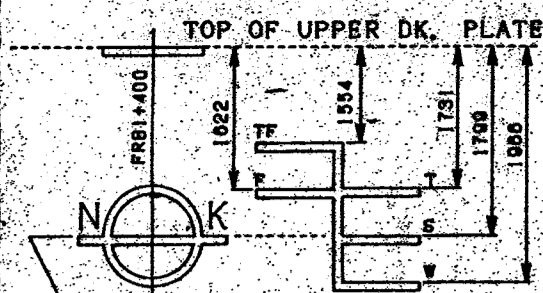
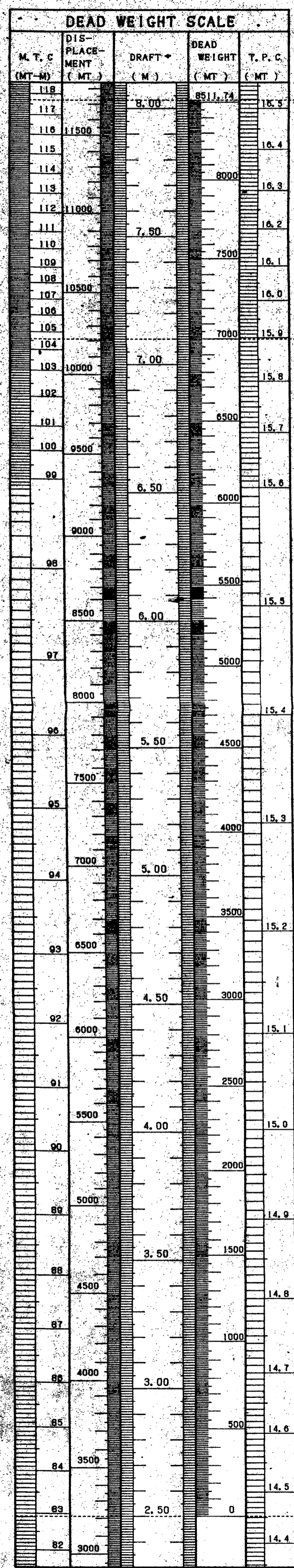


NOTE
13th. Nov. 1997 完成図として作製する。

PRINCIPAL PARTICULARS	
LENGTH (O.A)	121.35
LENGTH (P.P)	112.40
BREADTH (M.L.D)	17.20
DEPTH (M.L.D)	9.80
DRAFT (EXT.)	8.032
DRAFT (SCANT)	8.10
DEAD WEIGHT (at drft=8.032m)	8,511.74
GROSS TONNAGE	5,315.7
C.O.T CAPACITY	8,881.142
MAIN ENGINE	5,280 P.S.
COMPLEMENT	25
CLASS	NK N32 (Tanker Molasses or oils Flash point below 60°C and chemicals Type I & II) MNS2
GOING AREA	OCEAN GOING

CAPACITY PLAN AND DEAD WEIGHT SCALE



FUEL OIL TANKS						
NAME	FR. NO.	(100%)		(96%)		S.G. = 0.935
		CAPACITY (M3)	WEIGHT (T)	KG	I	
NO. 3 F O T (P)	19-36	181.41	162.83	35.47	6.92	61.4
NO. 3 F O T (S)	19-36	181.41	162.83	35.47	6.92	61.4
NO. 4 F O T (P)	21-36	116.21	104.31	36.38	11.51	86.9
NO. 4 F O T (S)	22-36	110.45	99.14	36.08	11.51	84.3
TOTAL		589.48	529.11			

DIESEL OIL TANKS						
NAME	FR. NO.	(100%)		(96%)		S.G. = 0.850
		CAPACITY (M3)	WEIGHT (T)	KG	I	
NO. 1 F O T (C)	32-35	21.14	17.25	39.58	0.75	174.8
NO. 2 F O T (P)	25-32	20.48	16.71	36.64	1.08	13.8
NO. 2 F O T (S)	18-32	27.88	22.75	37.89	1.15	14.9
TOTAL		69.50	56.71			

OTHER TANKS						
NAME	FR. NO.	(100%)		(80%)		S.G. = 0.800
		CAPACITY (M3)	WEIGHT (T)	KG	I	
CYL O T (S)	28-32	12.57	9.05	36.10	11.55	2.5
L O S T (P)	19-21	11.05	7.96	43.40	11.62	4.0
L O S T (C)	16-27	10.14	7.30	42.66	0.60	1.4
L O R T (C)	22-31	10.89	7.84	37.68	0.88	1.0
B O T (C)	9-16	17.58	12.66	47.75	1.09	5.9
STUFF B D SST T (P)	19-22	2.72	1.96	42.63	1.41	0.5
STUFF B D PURE T (P)	22-25	4.68	3.37	40.57	1.32	1.6

BALLAST WATER TANKS						
NAME	FR. NO.	(100%)		(96%)		S.G. = 1.025
		CAPACITY (M3)	WEIGHT (T)	KG	I	
NO. 1 B W T (P)	121-148	331.26	339.54	-36.38	4.11	361.3
NO. 1 B W T (S)	121-148	331.26	339.54	-36.38	4.11	361.3
NO. 2 B W T (P)	93-121	390.75	400.52	-17.79	3.11	980.1
NO. 2 B W T (S)	93-121	390.75	400.52	-17.79	3.11	980.1
NO. 3 B W T (P)	65-93	392.91	402.73	1.77	3.05	1026.8
NO. 3 B W T (S)	65-93	392.91	402.73	1.77	3.05	1026.8
NO. 4 B W T (P)	35-65	356.12	365.02	21.69	3.11	734.6
NO. 4 B W T (S)	35-65	356.12	365.02	21.69	3.11	734.6
TOTAL		2942.08	3015.62			

FRESH WATER TANK						
NAME	FR. NO.	(100%)		(96%)		S.G. = 1.000
		CAPACITY (M3)	WEIGHT (T)	KG	I	
A.P.T (F)(C)	1-9	141.75	141.75	52.92	8.57	511.5
A.P.T (A)(C)	AE-1	64.60	64.60	57.66	9.28	197.1
NO. 1 F.W.T (P)	9-15	23.16	23.16	48.49	9.12	8.9
NO. 1 F.W.T (S)	9-15	23.16	23.16	48.49	9.12	8.9
TOTAL		252.67	252.67			

CLEANING WATER TANK						
NAME	FR. NO.	(100%)		(96%)		S.G. = 1.000
		CAPACITY (M3)	WEIGHT (T)	KG	I	
F.P.T (C)	155-FE	186.80	186.80	-53.98	5.23	37.4
T/C F.W.T (C)	148-155	176.08	176.08	-46.88	5.56	192.0
TOTAL		362.88	362.88			

CARGO OIL TANK CAPACITY						
NAME	FR. NO.	(100%FULL)		(96%)		S.G. = 0.935
		CAPACITY (M3)	WEIGHT (T)	KG	I	
NO. 1 C O T (P)	132-148	454.913	-39.70	6.29	145.7	
NO. 1 C O T (S)	132-148	454.913	-39.70	6.29	145.7	
NO. 2 C O T (P)	121-132	429.823	-31.05	5.88	205.9	
NO. 2 C O T (S)	121-132	429.823	-31.05	5.88	205.9	
NO. 3 C O T (P)	106-121	653.453	-22.04	5.70	341.7	
NO. 3 C O T (S)	106-121	653.453	-22.04	5.70	341.7	
NO. 4 C O T (P)	93-106	573.574	-12.28	5.69	302.0	
NO. 4 C O T (S)	93-106	573.574	-12.28	5.69	302.0	
NO. 5 C O T (P)	78-93	659.475	-2.48	5.69	349.9	
NO. 5 C O T (S)	78-93	659.475	-2.48	5.69	349.9	
NO. 6 C O T (P)	65-78	559.950	7.22	5.69	295.7	
NO. 6 C O T (S)	65-78	559.950	7.22	5.69	295.7	
NO. 7 C O T (P)	49-63	632.140	17.98	5.73	342.2	
NO. 7 C O T (S)	49-63	632.140	17.98	5.73	342.2	
NO. 8 C O T (P)	37-49	466.663	27.08	5.89	249.6	
NO. 8 C O T (S)	37-49	466.663	27.08	5.89	249.6	
TOTAL		8881.142				

SHIP NO	SNO 341
NAME OF OWNER	NEW SEAGULL SHIPPING S.A.
NAME OF SHIP	FIONA
KIND OF SHIP	T. K. M

CAPACITY PLAN AND DEAD WEIGHT SCALE

SCALE 1/200

(N D)
KURINOURA DOCKYARD CO. LTD
YAWATAHAMA JAPAN.

DRAWN BY	F. SHIMIZU
CHECKED BY	
CHIEF OF PART	
CHIEF OF SECT	
DATE	13th NOV. 1997
DRWG. NO.	F - 1