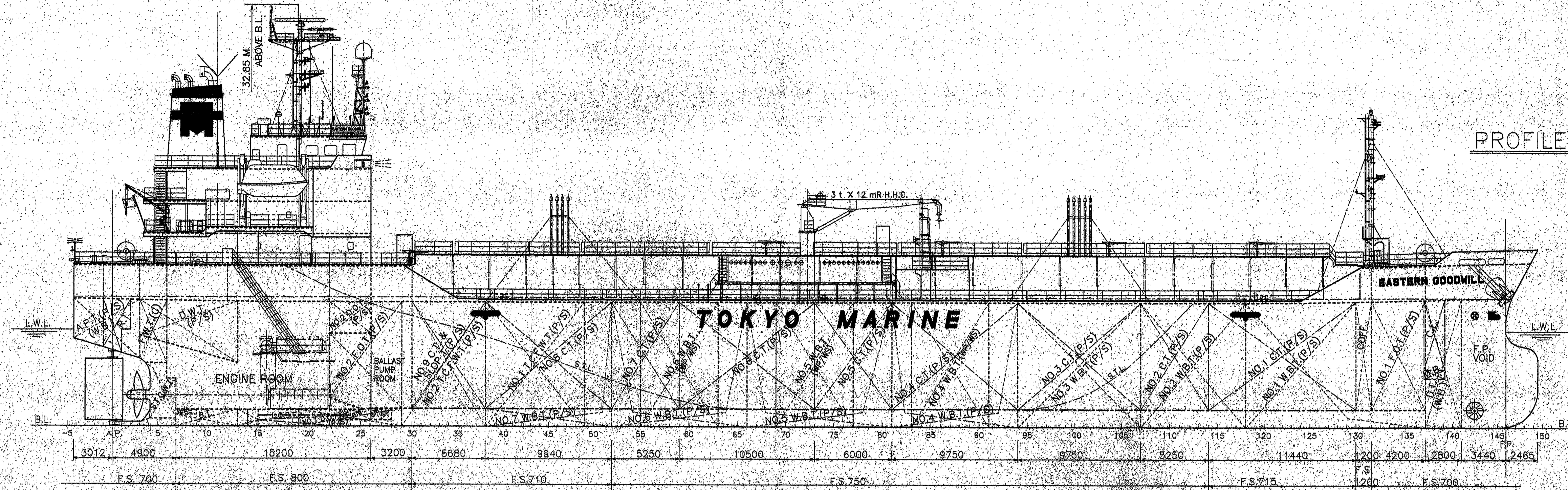


GENERAL ARRANGEMENT

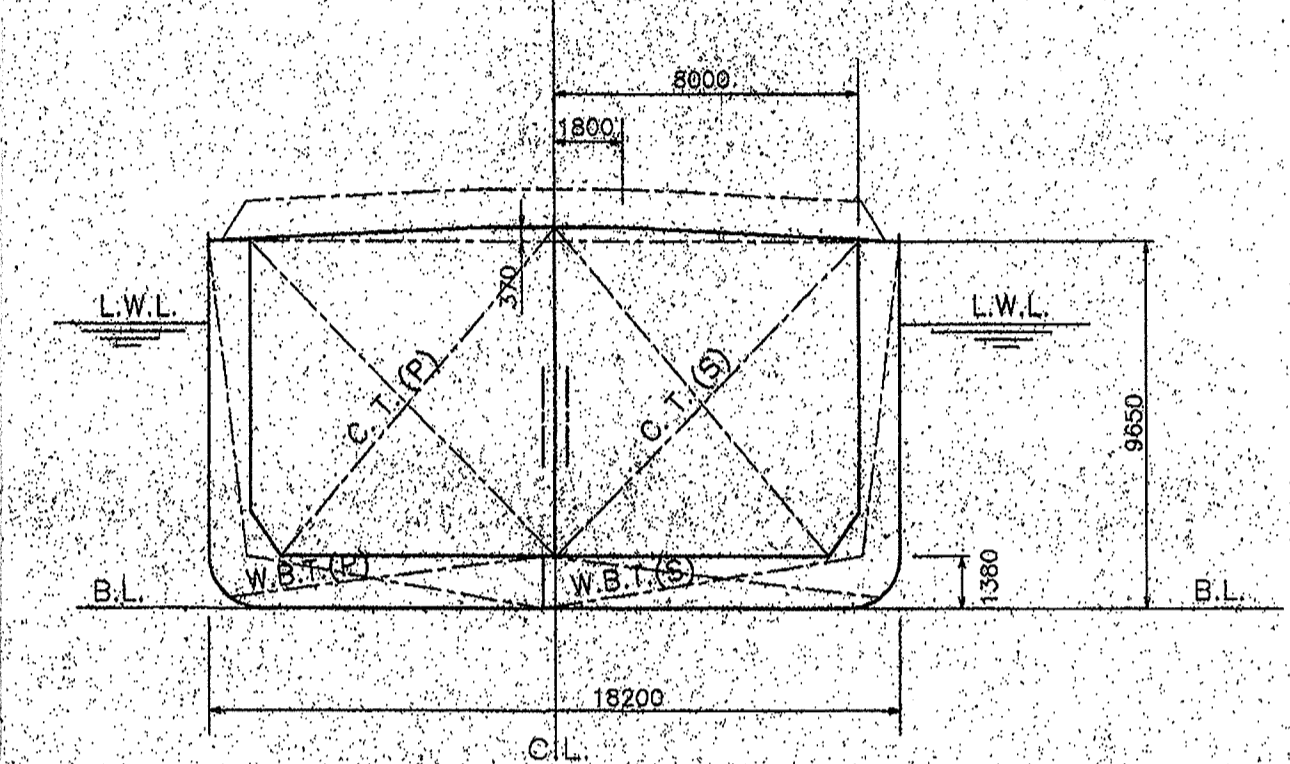
REMARKS

2012.02. - Transfers Of Class

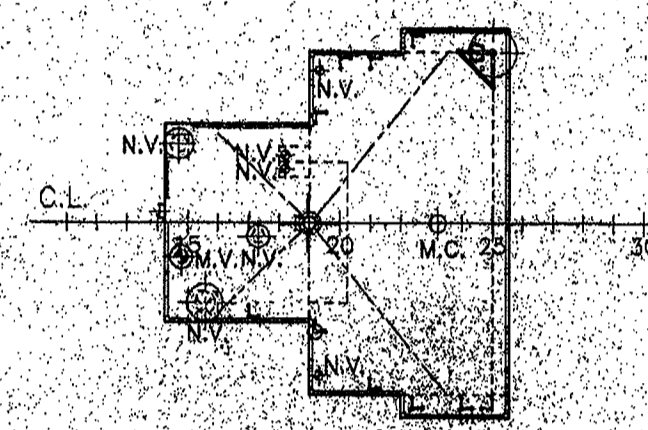


PROFILE

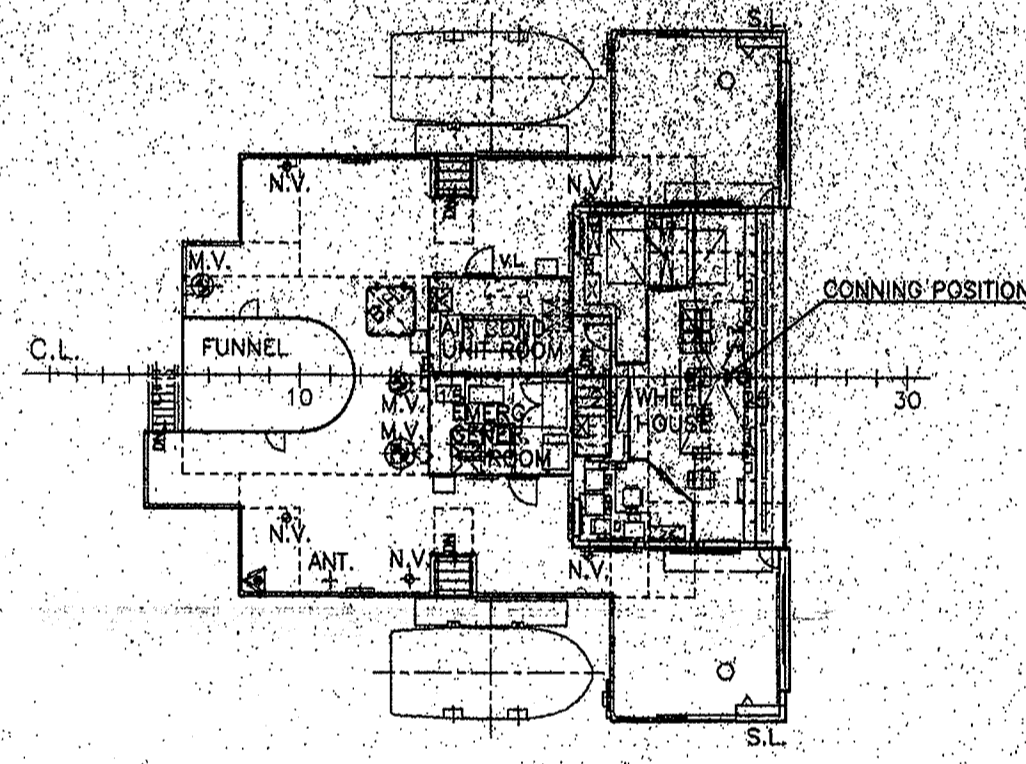
MIDSHIP SECTION



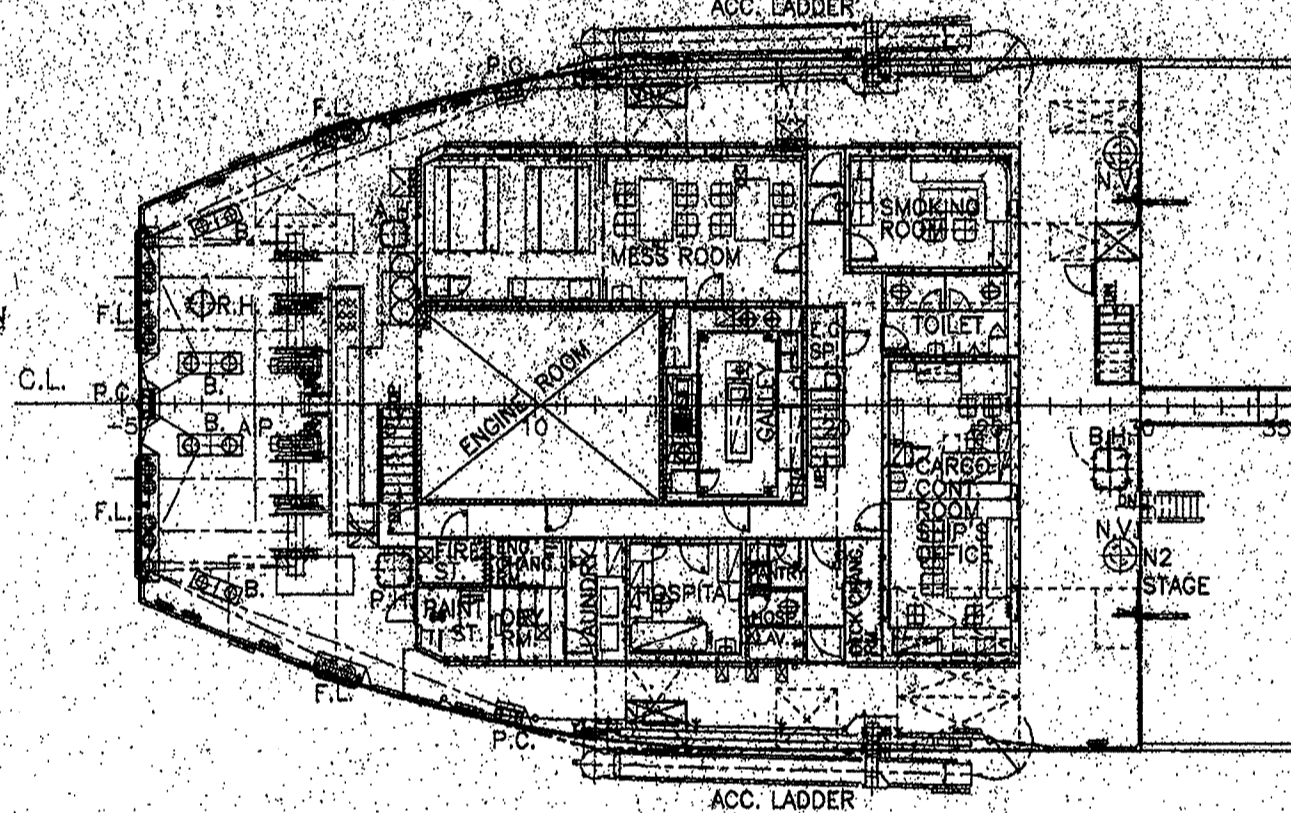
COMPASS DECK



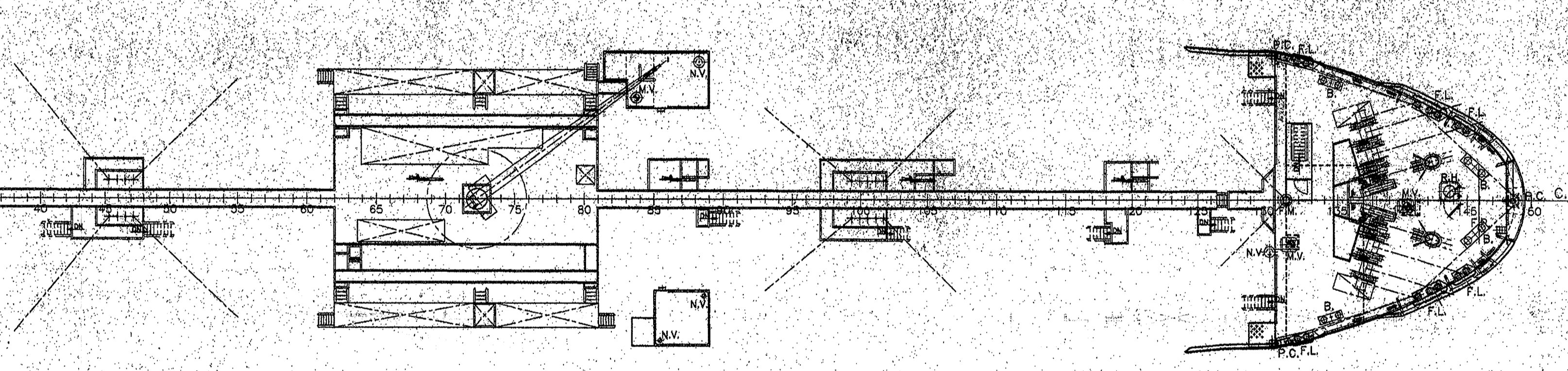
NAV. BRIDGE DECK



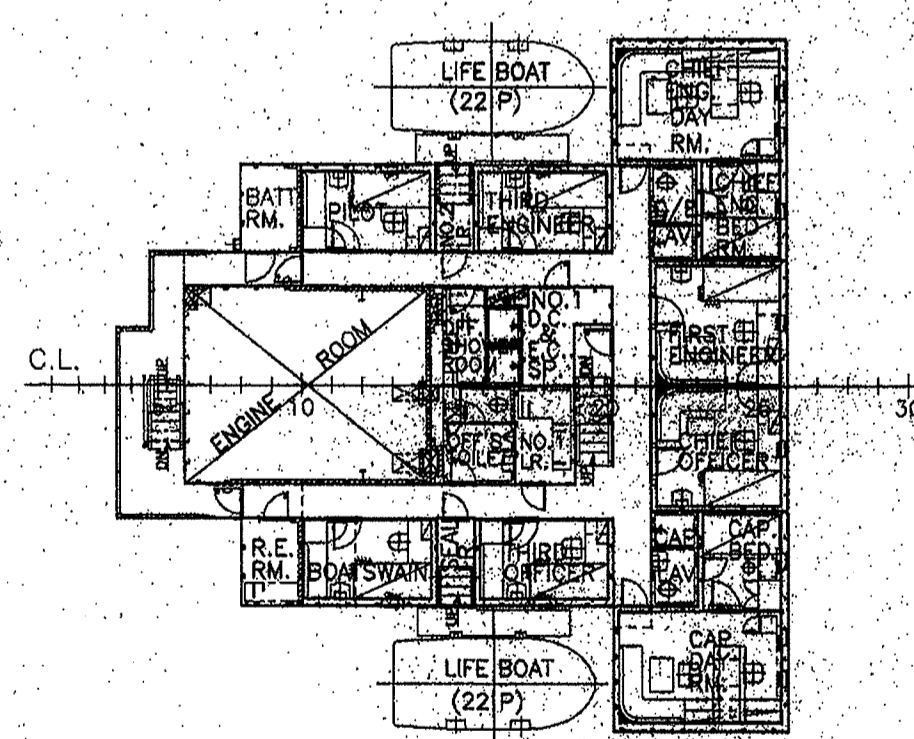
POOP DECK



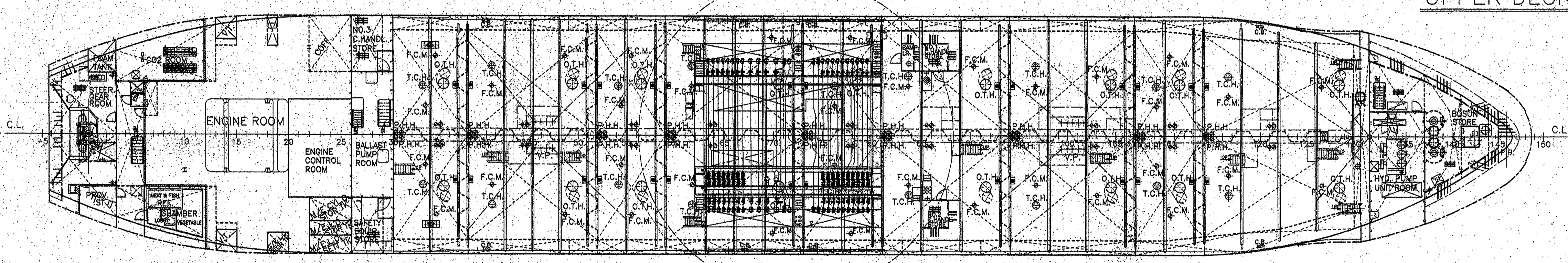
F'OLE DECK



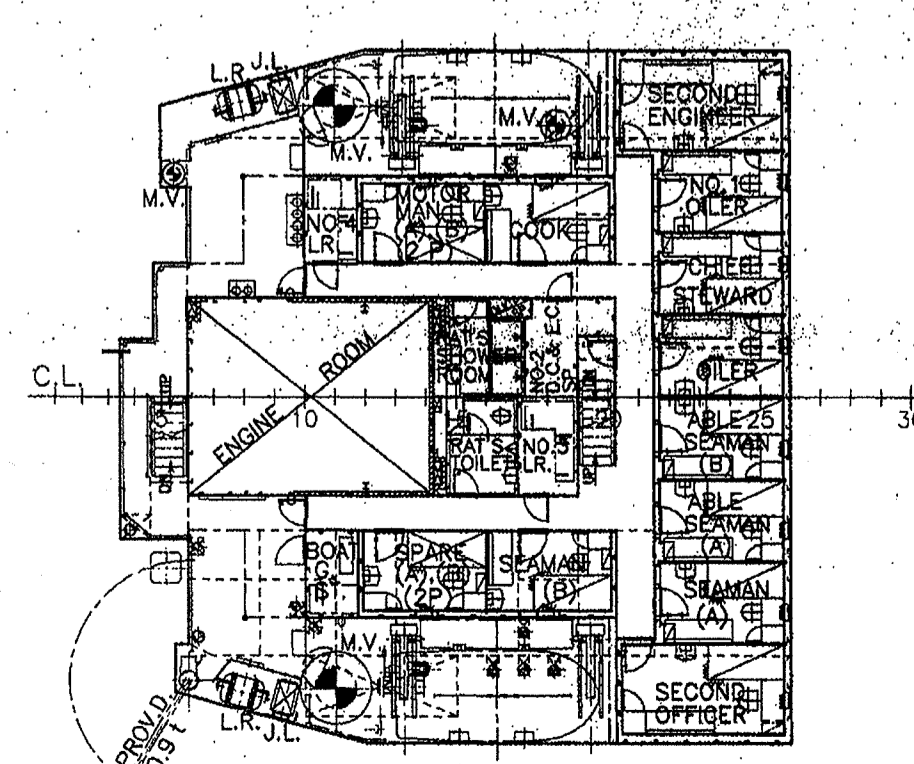
CAPTAIN DECK



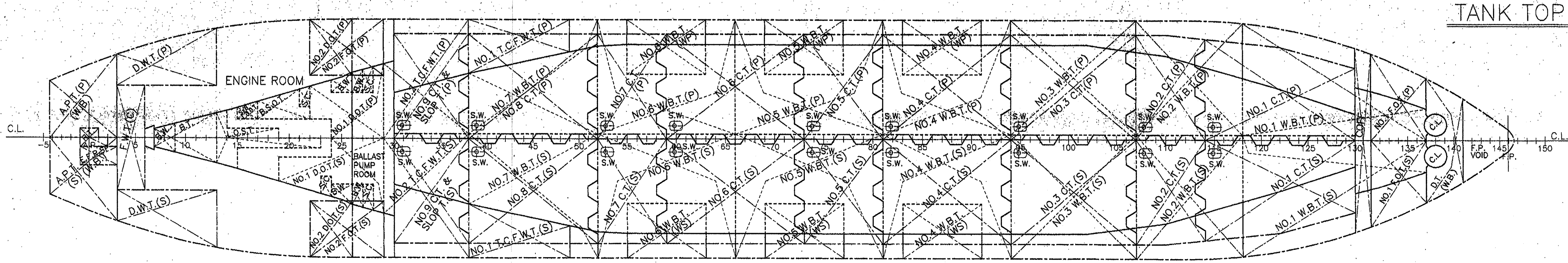
UPPER DECK



BOAT DECK



TANK TOP



This drawing (product) is the PROPERTY of SHIN KURUSHIMA DOCK YARD Co., Ltd. and is confidential. In this connection, please kindly observe the following. It shall not be traced, nor copied, nor used for any other purpose, nor communicated to any other person without our written permission.

PRINCIPAL PARTICULARS

LENGTH (O.A.)	113.98 M
LENGTH (P.P.)	108.50 M
BREADTH (MLD)	18.20 M
DEPTH (MLD)	9.65 M
DRAFT (EXT. SUMMER)	7.478 M
DEADWEIGHT	8740 t
GROSS TONNAGE	5372
MAIN ENGINE	1 SET OF B&W 6L35MC (Mark6)
M.C.O.	3900 kW(5303 PS) x 210 min ⁻¹
SERVICE SPEED	ABOUT 13.7 KNOTS
CLASSIFICATION	KOREAN REGISTER (K.R)

OWNER:	SHIPMAN CO., LTD
SHIP NAME:	MISIKAN (DONGBANG CHEMI)
	SNO. 5150
GENERAL ARRANGEMENT	
- FINISHED PLAN -	
GENERAL MANAGER	T. Kamada
ASST. GENERAL MANAGER	K. Makiyama
MANAGER	K. Makiyama
ASST. MANAGER	M. Miwa
DRAWN	
DATE	November 1, 2001
SCALE	1/200
SHIN KURUSHIMA DOCK YARD CO., LTD.	
EHIME JAPAN	
ENGINEERING DIVISION	
LIST NO.	C-3

DWG. NO. C02-002

図面寸法 (A0) 975 x 635
 製図寸法 (A0) 1015 x 675