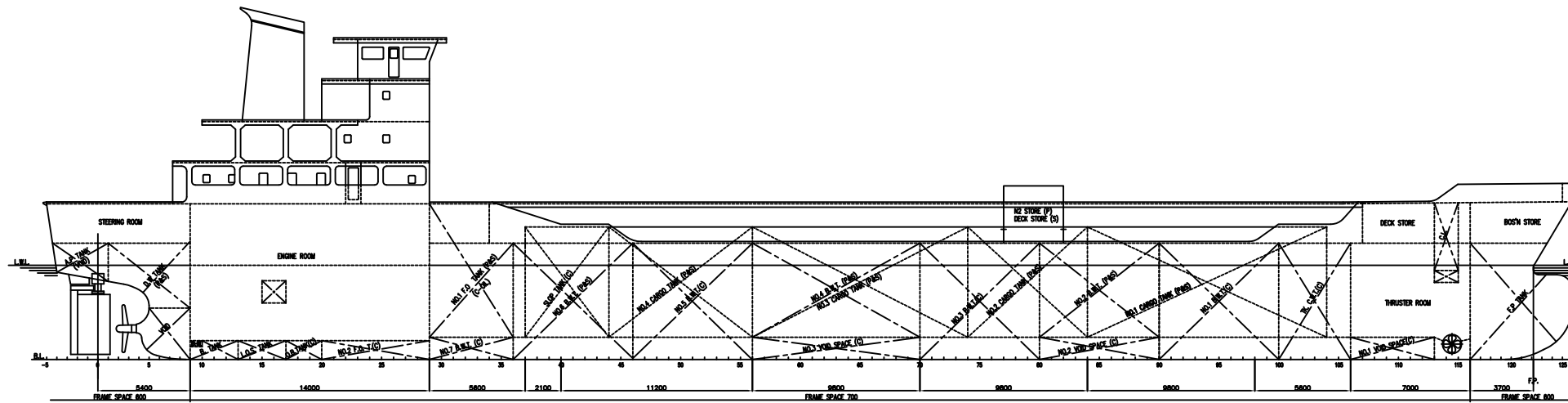


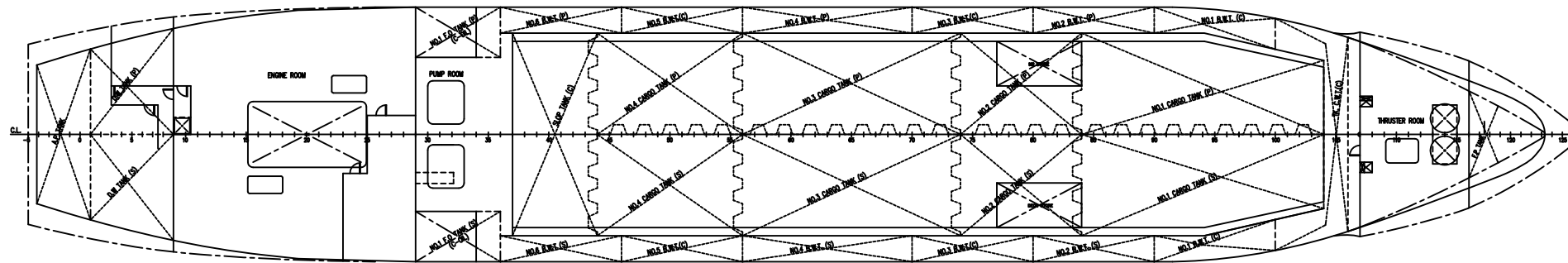
CAPACITY PLAN

PLAN HISTORY

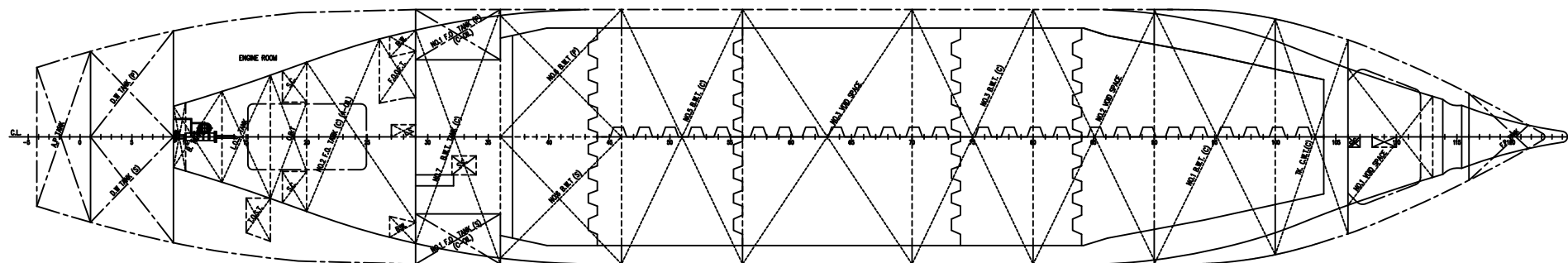
REV. NO.	DATE	DESCRIPTION	REMARK
	2015.05.	- 본 도면은 2014년 12월 본선도입후 항산문만 전용선에서 석유화학제품 운반선으로의 개조용으로 작성함.	



UPPER DECK PLAN



BOTTOM PLAN



REMARK
1. + : FORWARD FROM MIDSHIP
2. - : AFT. FROM MIDSHIP

PRINCIPAL PARTICULARS

LENGTH O. A.	89.880 M
LENGTH B. P.	84.000 M
BREADTH (M.L.D.)	14.700 M
DEPTH (M.L.D.)	6.800 M
FULL LOAD DRAFT (SUMMER)(EXT.)	5.493 M
DRAFT (D.L.W.L.)	5.200 M
GROSS TONNAGE	2,500 T.
DEADWEIGHT APP.	3,500 T.
MAIN ENGINE	2,427 KW(3,300 PS)x1
NAVIGATION AREA	OCEAN GOING
CLASSIFICATION	K.R.
COMPLEMENT	14 P.

CARGO OIL TANKS					S.G. = 0.900	
COMPARTMENT	LOCATION (FRAME)	CAPACITY (M ³)		L. C. G. (M)	V. C. G. (M)	
		100%	96%			
NO.1 C. O. T (P)	84 ~ 104	491.876	472.201	22.357	4.542	
NO.1 C. O. T (S)	84 ~ 104	543.876	522.121	22.357	4.542	
NO.2 C. O. T (P)	74 ~ 84	268.454	257.716	12.140	4.472	
NO.2 C. O. T (S)	74 ~ 84	294.454	282.676	12.140	4.472	
NO.3 C. O. T (P)	56 ~ 74	483.616	464.271	2.340	4.472	
NO.3 C. O. T (S)	56 ~ 74	529.616	508.431	2.340	4.472	
NO.4 C. O. T (P)	44 ~ 56	322.744	309.834	-8.160	4.472	
NO.4 C. O. T (S)	44 ~ 56	352.744	338.634	-8.160	4.472	
SLOP TANK (C)	37 ~ 44	372.887	357.972	-14.679	4.474	
T O T A L		3660.267	3513.856			

WATER BALLAST TANKS					S.G. = 1.025	
COMPARTMENT	LOCATION (FRAME)	CAPACITY (M ³)		L. C. G. (M)	V. C. G. (M)	
		100%	96%			
F. P. T (C)	116 ~ F.E	85.224	40.413	3.305		
NO.1 B. W. T (C)	90 ~ 100	192.719	23.587	2.345		
NO.2 B. W. T (P)	80 ~ 90	42.190	16.626	4.110		
NO.2 B. W. T (S)	80 ~ 90	42.190	16.626	4.110		
NO.3 B. W. T (C)	70 ~ 80	207.964	9.593	2.042		
NO.4 B. W. T (P)	56 ~ 70	58.733	1.200	4.125		
NO.4 B. W. T (S)	56 ~ 70	58.733	1.200	4.125		
NO.5 B. W. T (C)	46 ~ 56	208.145	-7.195	2.041		
NO.6 B. W. T (P)	36 ~ 46	124.163	-14.775	2.475		
NO.6 B. W. T (S)	36 ~ 46	124.163	-14.775	2.475		
NO.7 B. W. T (C)	29 ~ 36	68.160	-20.074	0.654		
T O T A L		1212.384				

FUEL OIL TANKS ("C" OIL)					S.G. = 0.960	
COMPARTMENT	LOCATION (FRAME)	CAPACITY (M ³)		L. C. G. (M)	V. C. G. (M)	
		100%	96%			
NO.1 F. O. T (P)	29 ~ 36	96.940	93.062	-20.288	5.066	
NO.1 F. O. T (S)	29 ~ 36	96.940	93.062	-20.288	5.066	
F. O. OVERF. T (P)	26 ~ 29	5.550	5.328	-23.658	0.612	
T O T A L		199.430	191.452			

FUEL OIL TANKS ("A" OIL)					S.G. = 0.860	
COMPARTMENT	LOCATION (FRAME)	CAPACITY (M ³)		L. C. G. (M)	V. C. G. (M)	
		100%	96%			
NO.2 F. O. T (C)	20 ~ 29	49.730	47.741	-25.729	0.604	

LUB. OIL TANK					S.G. = 0.900	
COMPARTMENT	LOCATION (FRAME)	CAPACITY (M ³)		L. C. G. (M)	V. C. G. (M)	
		100%	96%			
L. O. S. T (C)	13 ~ 17	9.230	8.861	-29.940	0.544	

CLEANING WATER TANK					S.G. = 1.000	
COMPARTMENT	LOCATION (FRAME)	CAPACITY (M ³)		L. C. G. (M)	V. C. G. (M)	
		100%	96%			
TK C. W. T (C)	100 ~ 106	184.610	29.691	3.225		

FRESH WATER TANKS					S.G. = 1.000	
COMPARTMENT	LOCATION (FRAME)	CAPACITY (M ³)		L. C. G. (M)	V. C. G. (M)	
		100%	96%			
DRINK W. T (P)	1 ~ 9	52.735	-38.721	5.680		
DRINK W. T (S)	1 ~ 9	52.735	-38.721	5.680		
T O T A L		105.470				

MISC. TANK					S.G. = 1.000	
COMPARTMENT	LOCATION (FRAME)	CAPACITY (M ³)		L. C. G. (M)	V. C. G. (M)	
		100%	96%			
O. B. T (C)	17 ~ 20	9.230	-29.940	0.544		
B. H. T (C)	9 ~ 13	6.360	-34.914	0.641		
THER. O. T (S)	15 ~ 17	2.482	-31.652	4.086		

OWNER	SHIPMAN CO., LTD		
PROJ. NO.	A14-004	SUBJECT	D.W.T 3,500 TON CLASS OIL/CHEMICAL TANKER
APPROVED	J.H.CHUNG	TITLE	M/T "SUN BROOM"
APPROVED		<h2>CAPACITY PLAN</h2>	
CHECKED	S.W.LEE		
DRAWN	Y.H.CHUNG		
CONTACT NO.	+82 51 717 3700		
DATE	2015.05.	SCALE	1/1500
DESIGNER	ASDC	(株) 亞細亞船舶設計	Asia Ship Design & Engineering Co., Ltd.