



<http://www.smsc.co.kr>



ShipMan Co., Ltd

- Total Management (safety/Crew/Tech)
- In-House Education
- CBT
- PMS
- TMSA/Vetting
- Risk Control

A large cargo ship is silhouetted against a bright blue sky with scattered white clouds. The ship is on the water, and the sun is reflecting off the surface to the right. The ship has "SANKO LINE" written on its side.

Opening a New Era

TO PROTECT A LIFE & SHIP AT SEA BY ISM CODE
TO DELIGHT CUSTOMERS DESIRE THROUGH QMS
GREEN SEA TO THE FUTURE GENERATION THROUGH EMS

We Contribute to Reliabilities with PLEASURE to our clients via the Transportation of Raw Materials and Energy Resources

ShipMan CO., LTD.

■ Contents

- 02 Message from the Chairman
- 04 History
- 06 Safety, Quality and Environmental Objectives
- 07 Organization
- 08 Safety Management
- 09 Technical Management
- 10 Crew Resource management
- 11 In House Education System The Custom-made Education
- 12 In-House Education Modules and Curriculum

Message from the CEO



“

Since our country is surrounded by sea on three sides, and is called as the Korea penisular Our people has dreamed of Ocean Going and have educated Seamanship and ship building early ”

ShipMan Co.,Ltd is a Ship management company established on January 2009 for the management of specialized vessels such like Molten Sulphur, Molten caprolactam carriers and multi-chemical products carriers



ShipMan Co., Ltd



Our Ship management involves Technical and Engineering service, Maintenance, Repair, Supply or Supervision and Consultancy for operational procedures, Crew resource management and safety (Quality) Management Services which are entrusted by the ship owners.

These Managing Services have been executed with responsibility and authority in order to secure ship's seaworthiness and safe operation to meet our client's requirements with the accumulated Technical experience and Knowledge. Seafarers onboard as well as shore staff are proud of the Ship Management for these specialized vessels.

ShipMan Co.,Ltd is presently concentrating on the development of the Safety Management System and the improvement of the ship maintenance and efficiency towards its operations in accordance with the ISM Code for Safety Management System. We always exert our best efforts in achieving the planned goals of our company by way of implementing the flexible organization and safety system.

TMSA reports has been updated as per the OCIMF guidelines to be acceptable by the vetting organization.

ShipMan Co.,Ltd has provided ship's safe operation and working conditions and has strongly prohibited the abuse of alcohol and drugs onboard in accordance to our Risk Management.

ShipMan Co.,Ltd has recruited the technical human resource (Korean and Foreign Crews) on time for the managed fleet. We have maintained a pool of potential crews who are educated and certified through our In-house Education Curriculum and Custom-made training Modules.

To meet our client's requirements, we formulate a custom made Safety Management System (SMS) in compliance with our client's requirements as well as fleet configuration.

Our Ship Management System and practices are always welcome to hear your kind advices.

With assurances of our highest esteem, we remain.



Capt. *Hak-Yun, Kim* as the managers
ShipMan Co., Ltd



History



1990

- Apr.23,1990** Saehan Marine (Service) Co. Ltd.,
General meeting of stock holders and approval of statute
- Oct.7,1991** Registered corporation
- Oct.15,1991** Purchased M/V NO.5 SAEHAN and Obtained MPA's approval for domestic service on marine transportation
- Nov.21,1991** Registered ship management business on PMPA
- Dec.1,1992** Contracted Ship-Management with SAEHAN Marine Co. Ltd. for the sulphuric acid carriers M/V No.1 SAEHAN, M/V No.3 SAEHAN and molten sulphuric carrier M/V NAMHAE PIONEER
- Jan.21,1993** Contracted Ship-Management with AQUAMARINE PANAMA S.A. for the LPG carrier M/V PONY GAS
- Feb.1,1993** Contracted crewing management and technical management with the tropicana shipping, panama for the vessel M/V TROPICANA 1
- Feb.21,1994** Contracted Ship-Management with KSK(PANAMA) Corp. for the Molten sulphur carrier M/V TENSINMARU
- Apr.21,1994** Contracted Ship-Management with KSK(PANAMA) corp for the Molten sulphur carrier M/V No.8 KOKAMARU
- Dec.20,1994** Contracted Ship-Management with GAZTRANS DEVELOPMENT S.A for the LPG carrier M/V NEPTUNE GAS

1995

- May.12,1995** Contracted Ship-Management with GAZTRANS DEVELOPMENT S.A for the LPG carrier M/V URANUS GAS
- Jun.1,1995** Contracted Ship-Management with MIYAKO MARITIME Co. for the Molten sulphur carrier M/V SULPHUR ESPOIR
- Aug.31,1996** Terminated ship-management contract and redelivered M/V TROPICANA 1 to Owner
- Sep.1,1996** Contracted Ship Management with GAZTRANS DEVELOPMENT S.A for the LPG carrier M/V SIRIUS GAS
- Sep.1,1996** Adopted ISM CODE system and ISO 9002 series for our safety system standard
- Sep.1,1996** Contracted Ship-Management with VIKINGS GROUPS for the LPG carrier M/V PEGASUS GAS
- Jul.3,1997** To get DOC in accordance with from KR ISO 9002/ ISM CODE
- Mar.1,1998** Terminated ship-management contract and redelivered M/V TENSINMARU
- Sep.1,1998** Contracted Ship-Management with MIYAKO MARITIME CO. for the Molten Sulphur carrier M/V KOHSHINMARU
- Oct.1,1998** Contracted Ship-Management with Saehan Marine Co. for the Sulphuric Acid carrier M/V No.7 SAEHAN
- Jan 1,1998** Terminated ship-management contract and redelivered M/V NEPTUNE GAS

2000

- Jun.1,2000 Contracted Ship-Management with Gowell Shipping Co. for the Gas Carrier M/V GOWELL GAS
- Jun.15,2000 Contracted Ship-Management with Saga Star Line Co. for the Gas carrier M/V SEISHO
- Sep.1,2000 Contracted Ship-Management with Saehan Marine Co. for the Molten Sulphur carrier M/V SAEHAN SULPHUR
- Feb.5,2001 Contracted Ship-Management with VIKINGS ASIA for the LPG carrier M/V LYNX GAS
- Jul.25,2001 Sold No. 1 SAEHAN
- Jul.26,2001 Terminated ship-management contract and redelivered M/V GOWELL GAS
- Dec.15,2001 Contracted Ship-Management with Saehan Marine Co. for the Chemical Tanker M/V SAEHAN ACE
- May.1,2002 Contracted Ship-Management with KSK(PANAMA) corp for the Caprolactam carrier M/V EISHU
- Mar.14,2003 Contracted Ship-Management with Saehan Gas Co.,LTD for the Gas Carrier M/V SAEHAN GALAXY
- Apr.1,2003 Foundation Saehan Marine (gSERVICE) CO., LTD. as Ship management company for LPG carrier
- Apr.4,2003 Terminated ship-management contract and redelivered M/V PEGASUS GAS
- Apr.12,2003 Terminated ship-management contract and redelivered M/V LYNX GAS
- Jun.14,2003 Contracted Ship-Management with NIPPON GAS LINE Co.,LTD for the Gas Carrier M/V VITAMIN GAS
- Jun.19,2003 Terminated ship-management contract and redelivered M/V PONY GAS
- Jul.7,2003 Contracted Ship-Management with KSK(PANAMA) corp. for the Caprolactam carrier M/V CHISHU
- Jul.13,2003 Sold No. 3 SAEHAN
- Sep.1,2003 Contracted Ship-Management with HIKARI MARINE Co.,LTD for the GasCarrier M/V FORTUNE QUINTET
- Sep.2,2003 Terminated ship-management contract and redelivered M/V SEISHO To get ISO 14001 from KR
- Jan.1,2004 Contracted crewing management for the vessel M/V FORTUNE QUINTET
- Mar.15,2004 Contracted Ship-Management with Saehan Gas Co.,LTD for the Gas Carrier M/V LAGAS RAINBOW
- Apr.1,2004 Contracted Ship-Management with KSK(PANAMA) corp. for the Chemical Tanker M/V BANDAIMARU

2005

- Nov.26,2005 Contracted Ship-Management with SAEHAN MARINE CO., LTD. for the Chemical Tanker M/V SAEHAN BAYSTAR
- Feb.27,2006 Contracted Ship-Management with T & G OCEAN S.A. for the Chemical Tanker M/V SAKURA HARMONY
- Apr.1,2006 Contracted Ship-Management with T & K OCEAN S.A. for the Chemical Tanker M/V SAKURA SERENITY
- Apr.11,2006 Terminated ship-management contract and redelivered M/V URANUS GAS
- Sept.7,2006 Terminated ship-management contract and redelivered M/V VITAMIN GAS
- Oct.16,2006 Contracted Ship-Management with KSK(PANAMA) corp. for the Chemical Tanker M/V BANDAI II
- Apr.2,2007 Terminated ship management contract and redelivered M/V SIRIUS GAS
- Jul.12,2007 Terminated ship management contract and redelivered M/V SAEHAN ACE
- Aug.1,2007 Re-delivered all domestic fleet(NO.7SAEHAN, NO.17SAEHAN, SAEHAN SULPHUR, SAEHAN BAYSTAR, SAEHAN GALAXY, LAGAS RAINBOW) to managers "SM Management Co., Ltd.", who has been established for the domestic owners "SMC and SMG" respectively. Accordingly, SMSC fleet (All vessel in TMSA progress) has been separated completely from the NON-TMSA domestic fleet.
- Oct.1,2007 SAEHAN MARINE SERVICE CO., LTD.- Adopted OCIMF TMSA as the safety management evaluation tools.
- Jan.1,2009 Established ShipMan Co., Ltd on the foundation of the career for shipmanagement of Saehan Marine Service Co., Ltd.

Safety, Quality and Environmental Objectives



ShipMan Co., Ltd complies with the requirements of all related regulations as well as provides the best practice for our customers that enables the satisfaction and needs for efficient and lucrative management. We likewise continuously strive to improve the company's system for the ship's safety operations and environmental protection.

Company Objectives for Safety (Quality) and Environment

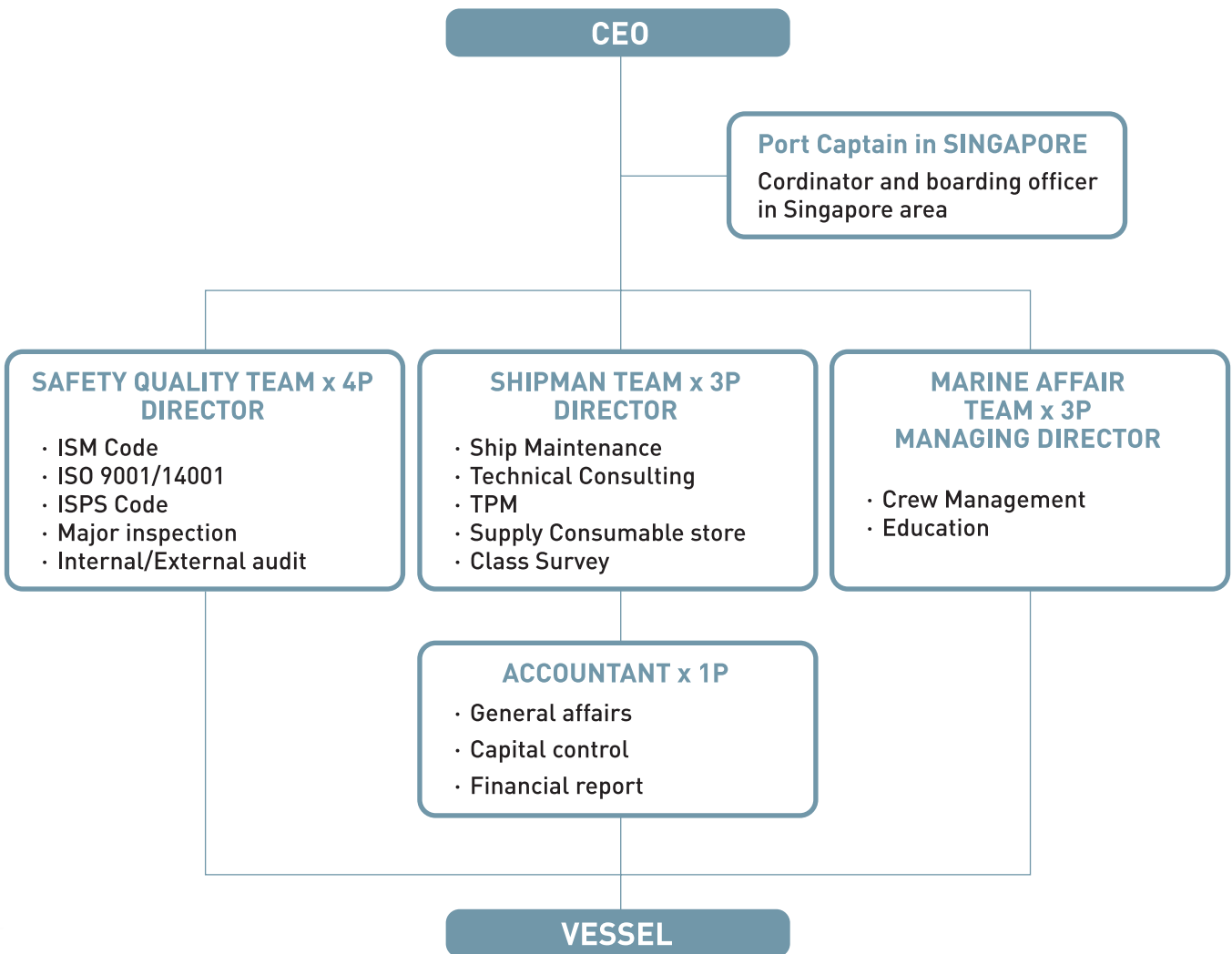
- 1) To ensure safety of human life and property at sea in compliance with the relevant regulation.
- 2) To enhance customer's satisfaction through TMSA implementation.
- 3) To implement business ethics through environmental protection.
- 4) To enhance the ability to handle safety operation and contingency response by improving the qualification and health of members.



Customers' Satisfaction

- Safety operation
- Safety maintenance
- Qualified Crewing management
- TMSA for Oil major's inspection
- PSC inspection

Organization



Safety Management

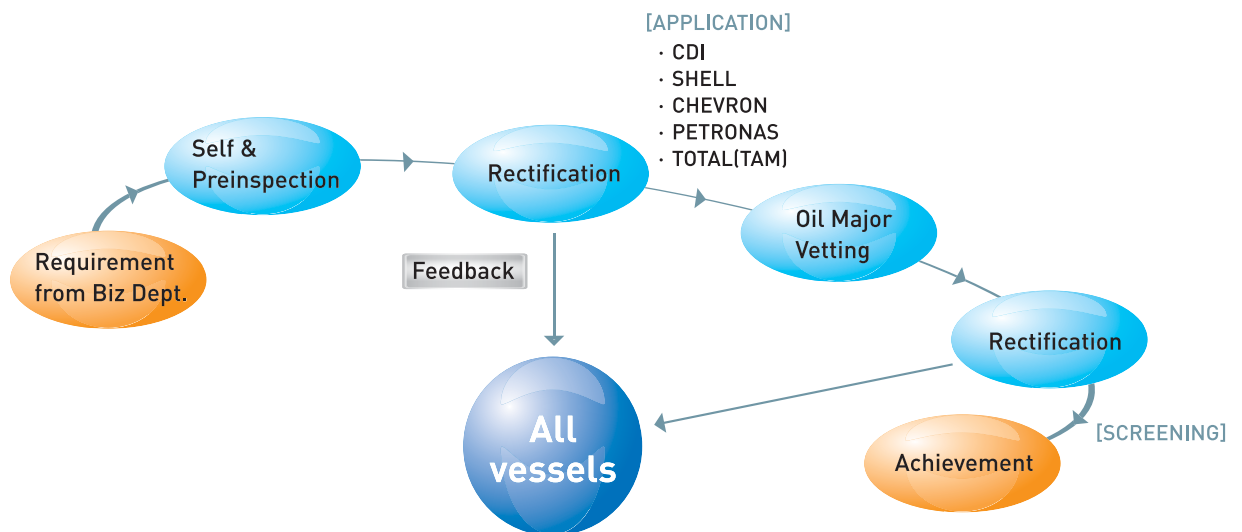
ISM CODE, ISO9001/14001, ISPS CODE, TMSA

The safety and quality of our service and operation is our main priority. Every aspect of our operations is closely monitored on a daily basis which we formulated as the Morning Call System. This ensures that all activities are regularly handled in accordance to the Safety and Quality Management System. In 2009, ShipMan Co., Ltd has obtained DOC/SMC by ISM Code, and adopted for ISO9001:2000 Quality Management Standards.



In 2009, ShipMan co.,Ltd has been audited Quality Management system in accordance with ISO9001:2000 standards and extended to the environmental Management standards of ISO14001:2004 and applied it to ship Management services as shown the certified ISO 9001 and ISO 14001 Logos.

MAJOR INSPECTION



Technical Management

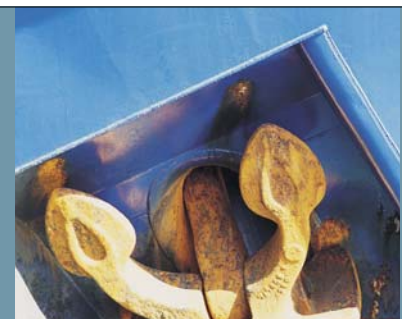
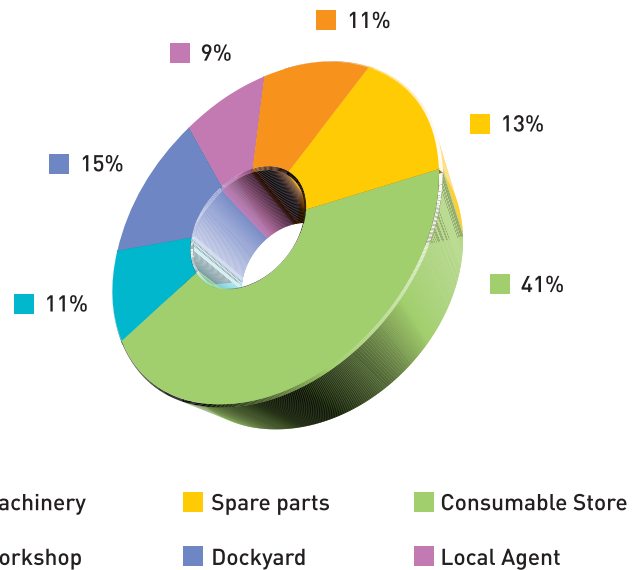
FULL TECHNICAL MANAGEMENT

ShipMan Co., Ltd provides professional, efficient, and long term technical management for the following in both Far East and South East Asia trade areas:

- SUPERVISING of THE SHIP OPERATIONS
- DOCKING REPAIR MANAGEMENT
- SHIP MAINTENANCE
 - SUPPLY CONSUMABLE STORE
 - ARRANGEMENT SPARE PARTS
- TPM(Total Productive Maintenance Service)
- TECHNICAL CONSULTANT-Shipbuilding
- DAILY MORNING CALL SYSTEM

* SUB-CONTRACTORS WITH ShipMan

Machinery Spare parts	5
Consumable Store	6
Workshop	19
Dockyard	5
Local Agent	7
Other	4
TOTAL	56



Crew Resource management

THE RECRUITMENT PROCESS AND CREW MANAGEMENT ARE ON LUMPSUM BASIS

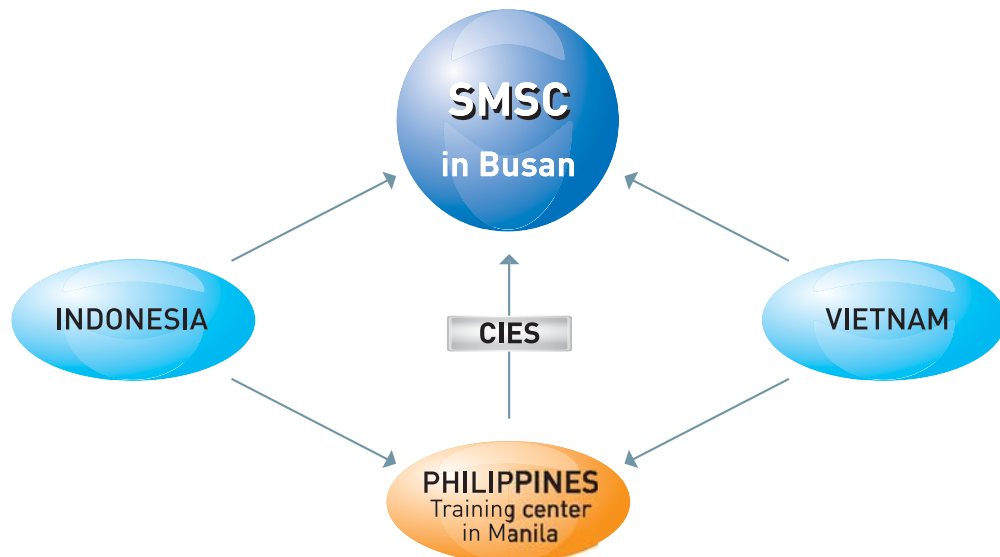
We provide full crew management through our unique total management program which services the owners with a long term manpower resource of qualified officers and ratings.

As the ship managers, we have the high expectations for our seafarers who are qualified, certified, and eventually employed for they are the main power and extension of our company's reputation.

Performance and high quality services are achieved through a team of experienced seafarers and our highly proficient shore-based task force.

Our Human resources are further enhanced by our In-house education system between the manager in Busan and training center in Manila.

Our experienced seafarers are a combination of multi-national crewmembers who are trained in our Cyber In-house Education System(CIES).



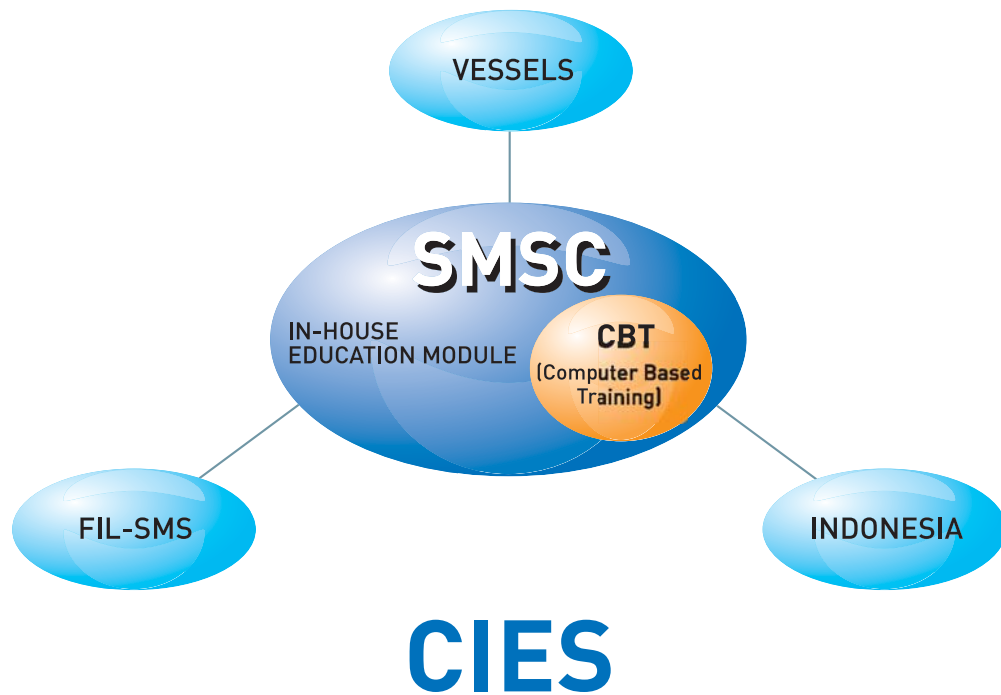
As of Jan. 2009

TYPE OF VESSEL	KOREAN	FILIPINO	INDONESIAN	TOTAL
LPG TANKER	9	33	0	42
CHEMICAL TANKER	18	44	2	64
OIL&CHEMICAL TANKER	5	15	5	25
Manning Service Only	7	12	6	25
TOTAL	39	104	13	156

In House Education System The Custom-made Education

In order to meet the requirements of the customers and the environmental circumstances prior to joining the vessel, the company provides the stand-by and the potential crews who are trained by custom-made education through the Cyber In-house Education System (CIES) as well as the on the-job training course. An optional overlap is considered as an orientation onboard as follows:

In-House Education Modules and Curriculum



In-House Education Modules and Curriculum

SMSC Module	Lectures of Module	Master C/O		Junior Officers		Deck Ratings		C/E 1/E		J.Engin eers		Engine Ratings		Galley Ratings		
		N	R	N	R	N	R	N	R	N	R	N	R	N	R	
1	Prologue SQEM, Company Policy, Organization, Crew Screen.	2	1	2	1	2	1	2	1	2	1	2	1	2	1	
2	VIQ 2008, CDI 2007 Gas, Chemical, IMT(MEASC)2002,, Internal & External Audit, PSC Inspection, Port Information,, Mooring/Anchoring, Berth-un berthing Procedure, TPM+5S PDCA, Emergency Response, Drill Plan, Risk assessment, Cargo Handling, Account Procedure, KYT Training System, Management Garbage, Cargo Operation Procedure, ISM Form, International Regulation Prevent Collusion at Sea, Safety Management System, Salvage & rescue, Instrument Calibration Procedure, Control Document sent/Receiving, Stowage Plan	34	17	20	10	10	5	34	17	20	10	10	1	10	5	2
3	Ship Safety Operation Procedure, Bridge Resource Team Management	2	1	2	1	2	1	2	1	2	1	2	1			
4	Measuring Record Procedure, Boiler Control Procedure, Engine Room Resource Management, Bunkering Procedure, Check List of Machinery, Environmental	6	3	6	3	2	1	6	3	6	3	6	1			
5	Machinery Operation Manual, Bilge/Sludge treatment Procedure, Hot Work/Dangerous work Procedures,	4	2	4	2	2	1	4	2	2	1	2	1			
6	D/E Operation Procedure, Overhauling method for Purifiers.	2	1	2	1			2	1	2	1	2	1			
CBT Module 1	Personal Safety, Ship General Safety, ISM code, Introduction to MARPOL, Enclosed Space, Incident Investigation, Risk assessment, DVD Personal Safety, DVD Ship General Safety. DVD Personal Survival & Survival Craft. DVD Fire Fighting, Basic and Advanced.	8	4	4	2	4	2	8	4	8	4	8	4	8	4	
2	Security Awareness, Ship Security Officer Training System	2	1	2	1	2	1	2	1	2	1	2	1	2	1	
3	ISO14001 Environmental Management, Ballast Management, Bilge Water Separator, DVD SOPEP	4	2	2	1	2	1	2	1	2	1	2	1	2	1	
4	Voyage Planning, Satellite-GPC ECDIS.DVD Mooring & Anchoring,	4	2	2	1											
5	Tanker Operation1,2. Liquid Cargo Properties, Chemical Training Familiarisation/Advanced, Gas Training Familiarisation/Advanced, Pumps & Pumping Operation, Wall Wash, Use of Nitrogen,	40	20	40	20	10	5	20	10	20	10	10	5			
6	Inspection, TMSA,	2	1	2	1	2	1	2	1	2	1	2	1	2	1	
7	Energy Conservation	2	1	2	1	2	1	2	1	2	1	2	1	2	1	
8	Human Relation Ship, Team Leadership,	2	1	2	1	2	1	2	1	2	1	2	1	2	1	
TOTAL HOURS OF EDUCATION DURATION FOR IN HOUSE EDUCATION(TRAINING)		114	57	92	46	42	21	88	44	72	36	54	26	24	12	
TOTAL DAYS OF EDUCATION DURATION FOR IN HOUSE EDUCATION(TRAINING)		13	7	12	6	5	3	11	6	9	5	7	3	3	2	



SHIPMAN CO., LTD.

Our Ship Management System and practices are always welcome to hear your kind advices.

Thank you.



RM1007, KUKJE O/T, CHORYANG-DONG, DONG-GU, BUSAN, KOREA
TEL. +82-51-469-5945 FAX. +82-51-469-4069 E-MAIL shipman@shipman.co.kr